

The Great Southern District Emergency Management Committee (DEMC) met on the 7th July 2016. The DEMC was provided a number of presentations and considered a number of items; this is a summary of key issues from the meeting.

Presentations

Department of Planning – Local Planning Scheme Regulations, State Planning Policy 3.7 Planning in Bushfire Prone Areas and Guidelines

The Department of Planning provided a presentation on recent changes to the *Planning and Development (Local Planning Schemes) Regulations 2015*, the Regulations are a major part of Western Australia's planning reform agenda, affecting arrangements for local planning strategies, schemes and amendments. A new State planning policy, *State Planning Policy 3.7 Planning in Bushfire Prone Areas* (SPP 3.7) was also gazetted with accompanying *Guidelines for Planning in Bushfire Prone Areas* (the Guidelines) on 7 December 2015.

SPP 3.7 and the Guidelines apply to all higher order strategic planning documents, strategic planning proposals, subdivision and development applications located in designated bushfire prone areas.

All planning proposals within designated bushfire prone areas are now required to undertake upfront bushfire risk assessment, identify bushfire hazards and how they can be mitigated using either the performance principles or acceptable solutions within the Guidelines.

Department of Defence – Joint Operations Support Staff WA

Department of Defence provided a presentation starting with an overview of Defence in WA, the roles and functions of the Joint Operations Support Staff (JOSS), JOSS WA liaison, what Defence can provide and examples of past support. This included the Defence Aid to the Civil Community (DACC) and Defence Force Assistance to the Civil Authority (DFACA).

Shire of Katanning AWARE Project

The Shire of Katanning obtained an AWARE Grant in 2015/2016 to conduct a workshop to examine "How can agencies work together to assist CaLD communities in the Shire of Katanning to understand and reduce the risk of emergencies?" The one day workshop was well attended and used a range of methods to understand the CaLD community and how government and non-government support groups interact with each other and emergency services to support each other. The workshop heard from a range of presenters, and group activities to identify current treatment options, prioritise current and future treatment options and mapped out a plan to continue the conversation.

Great Southern Risk Assessment: Results and Discussion

As part of the [State Risk Project](#), in 2015 the DEMC undertook a series of risk workshops to examine the risk from;

- animal and plant biosecurity
- bushfire
- earthquake
- flood
- marine transport emergency
- storm

During the risk assessment workshops, the impacts of these six hazards on five key impact areas (economy, public administration, people, environment, social setting) were assessed through 316 risk statements. Over the course of the workshops, 27 agencies were represented. The workshops followed the methodology and criteria outlined in the [WA Emergency Risk Management Guide 2015](#) and the National Emergency Risk Assessment Guidelines 2015 (NERAG).

The DEMC is planning to host a risk treatment workshop in September/October 2016 to commence work on developing risk treatment strategies for the identified risks.

Local Emergency Management

The DEMC noted the excellent work being done by LEMCs in the District. In particular the DEMC noted the LEMA for six LEMCs. The six LEMA noted at this DEMC and the five sets noted at the previous DEMC have been sent to SEMC for noting at the August SEMC meeting.

The DEMC considered the outcomes from a number of LEMC exercises after they had submitted their post exercise reports. The Committee recognised some of the challenges faced by LEMCs in delivering exercises and discussed a range of strategies it will be putting into action to support LEMCs.

DEMC Annual Report and Business Plans

The DEMC noted the submission of its Annual Report to SEMC and the completion of the 2015-2016 Business Plan. The Committee further considered a new Business Plan to take it to 2018. The new Business Plan aligns to the SEMC Strategic Plan, particularly by using the Risk, Capability and Impact pillars to drive its business into the future.

District Emergency Management Exercise

Exercises are an essential component of preparedness and should be used to enhance capability and contribute to continuous improvement.¹

The [Major Incident Review of the Esperance District Fires](#) (March 2016) noted;

The district emergency management arrangements enabled a broader set of agencies to plan for the response, although differences in agency boundaries constrained this to some extent

However, one breakdown in this broader level of regional inter-agency coordination was identified. There are differences in the boundaries of emergency management response and support agencies, which are different again from the emergency management district boundaries. Esperance is in the Goldfields-Esperance emergency management district. This meant that the Esperance DEMC agencies were not included in the DEMC briefings that took place in Albany on 16 and 17 November, although all affected Shire CEOs in the DFES Great Southern region were briefed by the regional office. This may have resulted in a less coordinated response across the whole of the region, with Esperance disconnected from the actions being taken at a regional level by the DEMC.

As a result the Goldfields-Esperance DEMC has invited the Great Southern DEMC to take part in a joint exercise to improve cross boundary emergency coordination arrangements between agencies in major emergencies and to explore, verify and bold inter-agency and inter-EM District relationships. The DEMCs have agreed on the aim and objectives for the exercise which is now moving into the development phase. The exercise is aimed to be delivered in October ahead of the next fire season.

¹ Handbook 3, Managing Exercises, Australian Emergency Management Institute



SEMC Communiqué

The SEMC met on the 2 August 2016.

The meeting began with a presentation by Mr Giles Nunis, Government Chief Information Officer.

Mr Nunis updated the SEMC members on Digital WA—a WA government ICT strategy launched in May 2016.

He highlighted the key objectives and project deliverables. Broadly, the project proposes one digital network for all State Government agencies using a common platform. Using an integrated network will result in considerable savings for the government.

The Emergency Services Communications Strategy is positioned under the Digital WA strategy aligning to the project, through common principles, aims and objectives.

Key discussion areas from the 2 August meeting:

NATIONAL PARTNERSHIP AGREEMENT FOR NATURAL DISASTERS

Following the SEMC May 2016 meeting, the SEMC Secretariat was invited to prepare a detailed plan and cost breakdown for the proposed distribution of 2015-17 NDRP funds.

The SEMC is now in the unique position, where investment into reducing vulnerability from natural hazards can continue to strengthen the progress towards achieving WA's strategic priorities.

The 2015-2018 SEMC Strategic Plan focuses on developing a robust and integrated understanding of the 3 key pillars: Risk, Capability and Impact. In previous years, the Risk pillar received most of the NDRP funds. There is now the opportunity to commence the investigation into other priority areas such as Capability, Impact and Engagement.

The SEMC Secretariat also recognised the challenges faced by the SEMC Subcommittees—Recovery, Response and Capability, and Community Engagement—in proceeding their work. Each subcommittee would benefit from the receipt of NPA-NDR funds, helping to achieve NSDR priority outcomes, and significantly advance the priorities and strategies of each.

The SEMC Secretariat used this rationale to formulate a proposed detailed plan and presented recommended programs to the SEMC:

- **State Risk Project Phase 5** – continuation of the local level operational rollout and the treatment framework.
- **State Capability Project** – develop a strategic, state-wide assessment of capabilities.
- **State Recovery Support program** – support the delivery of key outcomes identified in the 2016-19 State Recovery Subcommittee strategic work plan
- **State Response and Capability Support program** – support the delivery of key outcomes identified in the 2016-19 State Response and Capability Subcommittee strategic work plan

and aims to be more incisive and informative. Formal invitations will be sent to key SEMC stakeholders shortly.

- An improved reporting framework was presented to the SEMC to be used within the Secretariat and as a tool for reporting to the SEMC.

STATE RISK PROJECT

To date, the State Risk Project team have investigated 47 hazard scenarios across WA with 2843 risk records in the database. Over 800 participants have been involved in the process to date from 110 federal, state and local government agencies, non-governmental organisations and private companies.

The State Risk Project is now focusing on further refining the development of the Treatments Framework. To date three pilot 'treatment' workshops have been conducted for the Kimberley data.

The next phases include the local roll out component. Planning is now underway for a selected group of local government stakeholders to start the risk process in last quarter of 2016.

OTHER UPDATES

A range of projects and updates were discussed and noted by the SEMC:

- Emergency Alert costs and funding; Approval of the deferred review date for Westplan-HAZMAT to 30 June 2017
- The report and outcomes of the Strategic Review of Westplans CBRN, HAZMAT, Human Epidemic, Nuclear Powered Warship and Terrorist Act.
- Approved the revised draft Westplan-Earthquake
- Update on current local emergency management arrangements (LEMAs); since March 2016, the SEMC has received 17 new LEMAs
- The District Emergency Management Committee Overview report
- The minutes of all SEMC Subcommittees recent meetings

SEMC MEETINGS

The remaining SEMC meetings scheduled for 2016 are 4 October and 6 December.

For further information, please contact the SEMC Secretariat on (08) 9482 1700.



Government of Western Australia
State Emergency Management Committee

DATE: 29.08.2016
RECORD: ICR1616529
FILE: ES.SP.4

Our Ref: 3058/269
Enquiries: Mr Adam Smith
Telephone: 9845 5007

Mr Brent Bailey
Chief Executive Officer
Shire of Jerramungup
PO Box 92
JERRAMUNGUP WA 6337

Dear Mr Bailey

RE: LOCAL EMERGENCY MANAGEMENT ARRANGEMENTS

Thank you for providing a copy of the Shire of Jerramungup's Local Emergency Management Arrangements (LEMA). The LEMA has been reviewed by the State Emergency Management Committee (SEMC) Secretariat for compliance with the requirements of the *Emergency Management Act 2005*. I am pleased to advise that it meets the minimum requirements under the Act.

The Shire of Jerramungup's LEMA was tabled for noting at the last meeting of the SEMC held on 02 August 2016 Resolution No 40/2016 refers.

Please pass on my thanks to your Local Emergency Management Committee (LEMC) for their contribution to the arrangements.

Yours sincerely

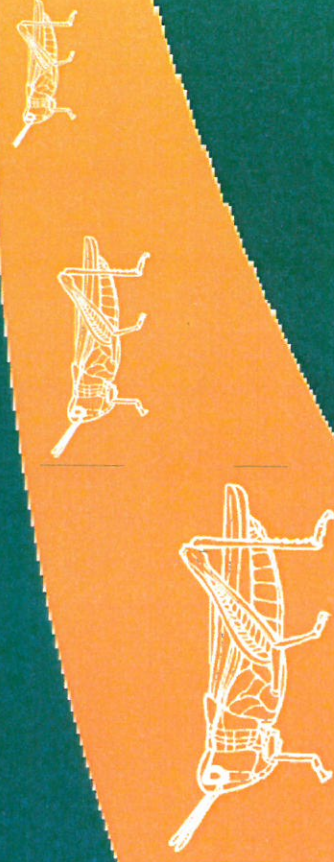
Mal Cronstedt AFSM
EXECUTIVE DIRECTOR
STATE EMERGENCY MANAGEMENT COMMITTEE SECRETARIAT

19/8/2016

cc Mr Adam Smith District Adviser

AUSTRALIAN PLAGUE LOCUST

Industry Briefing

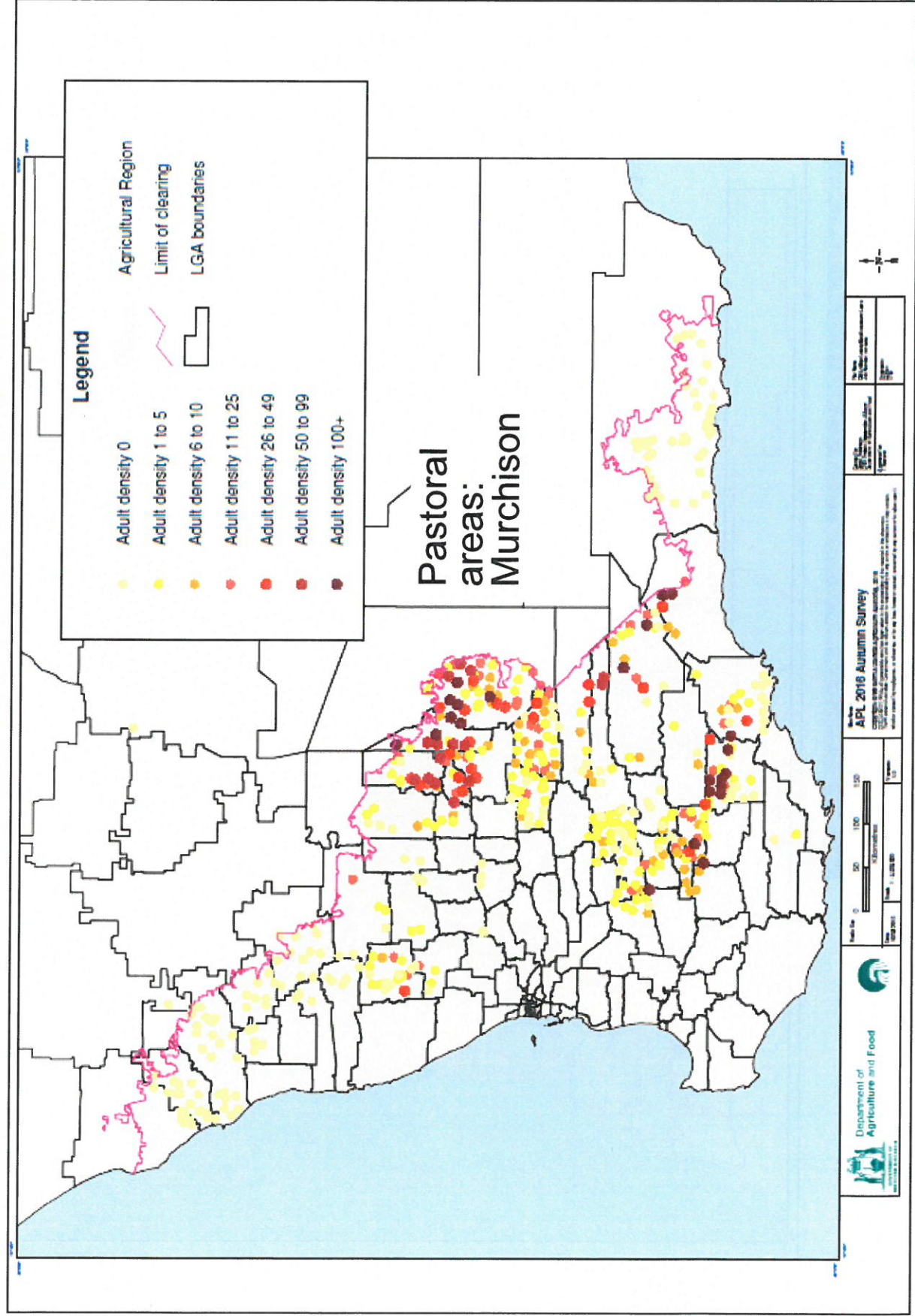


Supporting your success

- Declared pest - *Biosecurity and Agriculture Management Act 2007*
- Sporadic pest of broad-acre farming and horticulture
- Emerging nymphs and swarming locusts can cause severe damage
- Survival of locusts depend on seasonal conditions (temperature, feed availability)
- Autumn 2016 surveys indicated high numbers of APL in nine shires in Eastern Wheatbelt and Great Southern



Extent of Autumn Surveys



- **Densest hatchings will be restricted to pasture paddocks**
- **Some hatching may occur in crops, especially those that are minimum/zero till**
- **Potential for crop damage depends on the density of the crop canopy and how green the crop is in spring**
- **Spring APL activity is highly reliant on hatching hoppers having sufficient feed to reach adulthood**

Landholder responsibilities

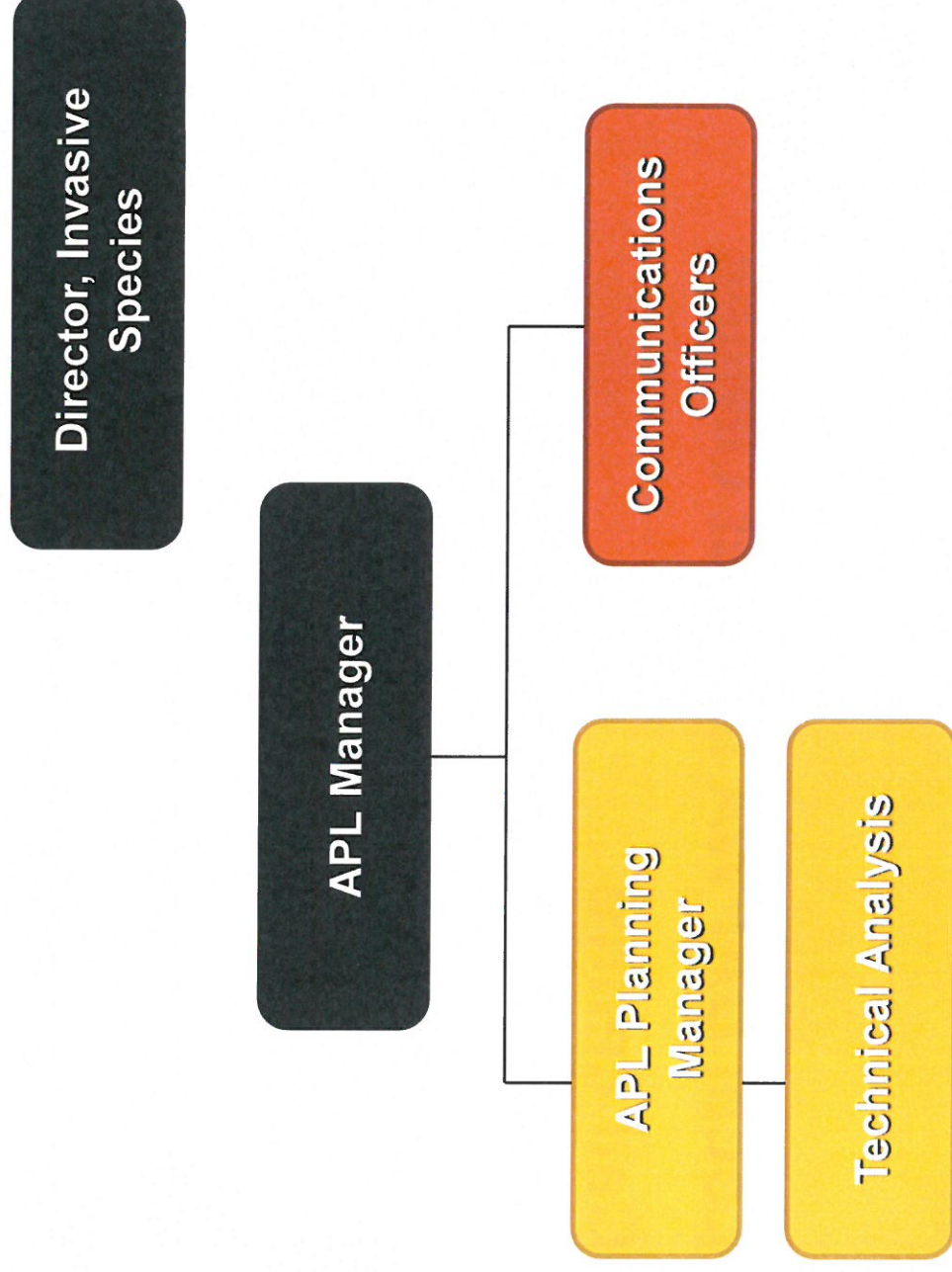
- Landholders should monitor their properties at least twice a week during September and October especially if locusts were present in paddocks in autumn 2016
- Landholders are encouraged to report APL to DAFWA so industry can be advised on the extent of hatchings
 - Consider using the PestFax Reporter app
 - Consider using the MyPestGuide app to correctly identify APL
 - Consider using the DAFWA website to correctly identify APL www.agric.wa.gov.au/locusts



- **Swarms can distract and reduce driver's visibility by soiling windcreens and getting caught under wipers**
 - Windscreen washer not effective
 - Clean windscreen regularly
 - Carry rags, a suitable bug cleaner and stop regularly
- **Locusts trapped in radiators may cause vehicles to overheat**
 - Use an appropriate radiator insect screen
 - Clean screen of locusts build-up to improve air flow
 - Monitor vehicle's temperature gauge



Current management framework



Supporting your success



- **Australian Pesticide and Veterinary Medicines Authority**
www.apvma.gov.au
- **Department of Health, Pesticide Safety Unit 9383 4244**
- **Poisons Information Centre 131 126**

